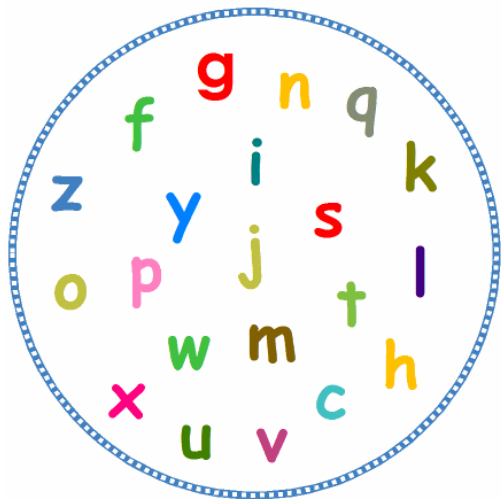


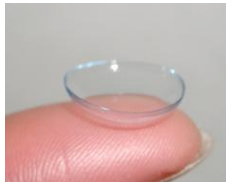
Word Puzzle 1

Some letters of the alphabet are missing from the circle. Can you use the missing letters to find something to eat?



Word Puzzle 2

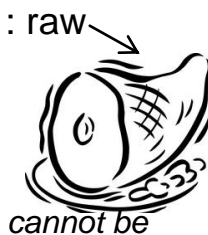
contact lens : eyes :: \_\_\_\_\_ : teeth



- brush
- mouth
- braces



leave : arrive :: \_\_\_\_\_ : raw



- stale
- fresh
- cooked

### Word Puzzle 3

Make words using all these letters:

stac

\_\_\_\_\_

\_\_\_\_\_



estn

\_\_\_\_\_

\_\_\_\_\_

### Word Puzzle 4

Look at each pair of words below. Put an "X" in front of the one that is more similar to a tennis ball.

\_\_\_ hot dog

\_\_\_ bunny

\_\_\_ soccer ball

\_\_\_ hamburger

\_\_\_ snake

\_\_\_ baseball

\_\_\_ boot

\_\_\_ lemon

\_\_\_ ice skate

\_\_\_ grape

### Word Puzzle 5

Fill in the missing letters and numbers.

1. KL is to NO as PQ is to \_\_\_\_\_

2. KM is to LN as MO is to \_\_\_\_\_

3. By is to Cx as Hs is to \_\_\_\_\_

### Word Puzzle 6

Add one letter to the word in capital letters to make a new word. The meaning of the new word is given in the clue.

1. HAIR                      seat                      \_\_\_\_\_
2. SPED                      pay out                      \_\_\_\_\_



### Word Puzzle 7

Move one letter from the first word and add it to the second word to make two new words.

1. play                      sap                      \_\_\_\_\_                      \_\_\_\_\_
2. loft                      lock                      \_\_\_\_\_                      \_\_\_\_\_

### Word Puzzle 8

Change the first word of the third pair in the same way as the other pairs to give a new word.

1. wane, wean                      pale, peal                      bare, \_\_\_\_\_
2. top, lop                      tight, light                      tax, \_\_\_\_\_

### Word Puzzle 9

Underline the pair of words most similar in meaning.

1. whisper, shout                      discuss, talk                      argue, agree
2. block, lump                      chunk, morsel                      part, whole

### Word Puzzle 10

Find and underline the two words which need to change places for the sentence to make sense.

1. Is the bottom of the garden there at a shed.
2. The road stopped at the bottom of the bus.

## **Solutions**

Word Puzzle 1 - bread

Word Puzzle 2 – braces, cooked

Word Puzzle 3 - stac – cats, acts, scat, cast  
estn – nets, tens, sent, nest

Word Puzzle 4 -

Word Puzzle 5 – 1) ST      2) NP              3) Ir

Word Puzzle 6 – 1) chair    2) spend

Word Puzzle 7 – 1) pay, slap      2) lot, flock

Word Puzzle 8 – 1) bear    2) lax

Word Puzzle 9 – 1) discuss, talk    2) block, lump

Word Puzzle 10 – 1) is, at    2) road, bus